



PathAssist™
SINUS GUIDEWIRE

The Entellus™ PathAssist™ Sinus Guidewire offers a cost-effective solution to confirm sinus access with fluoroscopy.



An affordable option compatible with fluoroscopic sinus surgery and XprESS™ balloon sinus dilation procedures.

- 0.035" diameter Sinus Guidewire with flexible nitinol core to reduce kinking
- Smooth PTFE polymer jacket to reduce friction
- Radiopacity provides fluoroscopic confirmation
- Angled atraumatic soft tip

Designed for responsive handling and confirmation during fluoroscopic sinus surgery and sinus balloon dilation procedures.

An addition to Entellus™ PathAssist™ tools, the Entellus Sinus Guidewire is for physicians who use fluoroscopy as part of sinus surgery with the Entellus XprESS™ Multi-Sinus Dilation Tool.

A low-cost solution for fluoroscopic guidance.

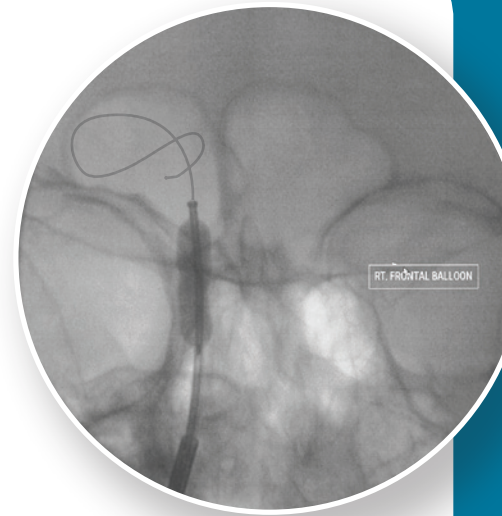
Cost effective and versatile, the Sinus Guidewire's flexibility and radiopacity provides consistent visibility and confirmation during sinus surgery with the XprESS Multi-Sinus Dilation Tool.

The Sinus Guidewire is engineered to navigate nasal pathways and to access the frontal, sphenoid and maxillary sinuses.

To learn more about the Entellus Sinus Guidewire and XprESS Multi-Sinus Dilation Tool visit www.entellusmedical.com

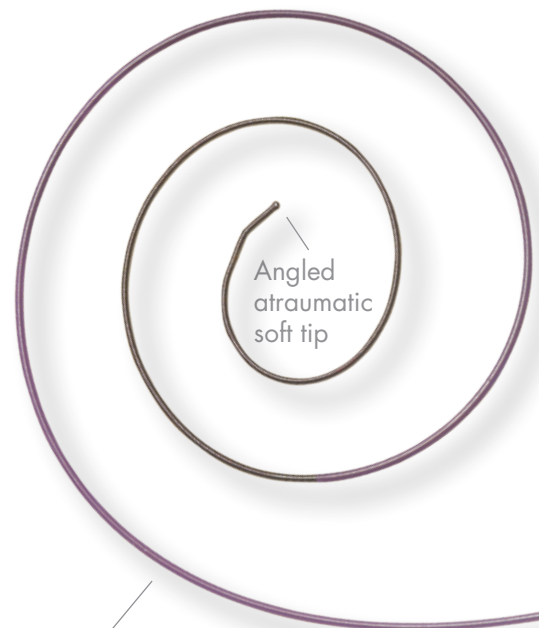
About Entellus Medical

Entellus Medical delivers innovative, high quality minimally invasive therapeutic solutions to healthcare providers and their patients who suffer from sinusitis.



Radiopacity provides fluoroscopic confirmation

0.035" diameter Sinus Guidewire with flexible nitinol core to reduce kinking



Angled atraumatic soft tip

Smooth PTFE polymer jacket to reduce friction

XprESS Indications for Use:

To access and treat the frontal recesses, sphenoid sinus ostia, and maxillary sinus ostia/ethmoid infundibula in adults using a trans-nasal approach. The bony sinus outflow tracts are remodeled by balloon displacement of adjacent bone and paranasal sinus structures. Please see the Instructions for Use for a complete listing of contraindications, warnings, precautions and adverse events. Refer to XprESS Instructions for Use (IFU) for complete instructions.

Sinus Guidewire Indications for Use:

To provide a means to access the frontal, sphenoid and maxillary sinuses for diagnostic and therapeutic procedures in adults aged 18 and over. Please see instructions for use for a complete listing of contraindications, warnings, precautions, and adverse events. Refer to PathAssist Sinus Guidewire Instructions for Use (IFU) for complete instructions.

Caution: Federal (USA) law restricts this device to sale by or on the order of a physician.

©2011 Entellus Medical, Inc. PathAssist and XprESS are trademarks of Entellus Medical, Inc. 2088-002 rA 06/11

To order: Please call 866-620-7615